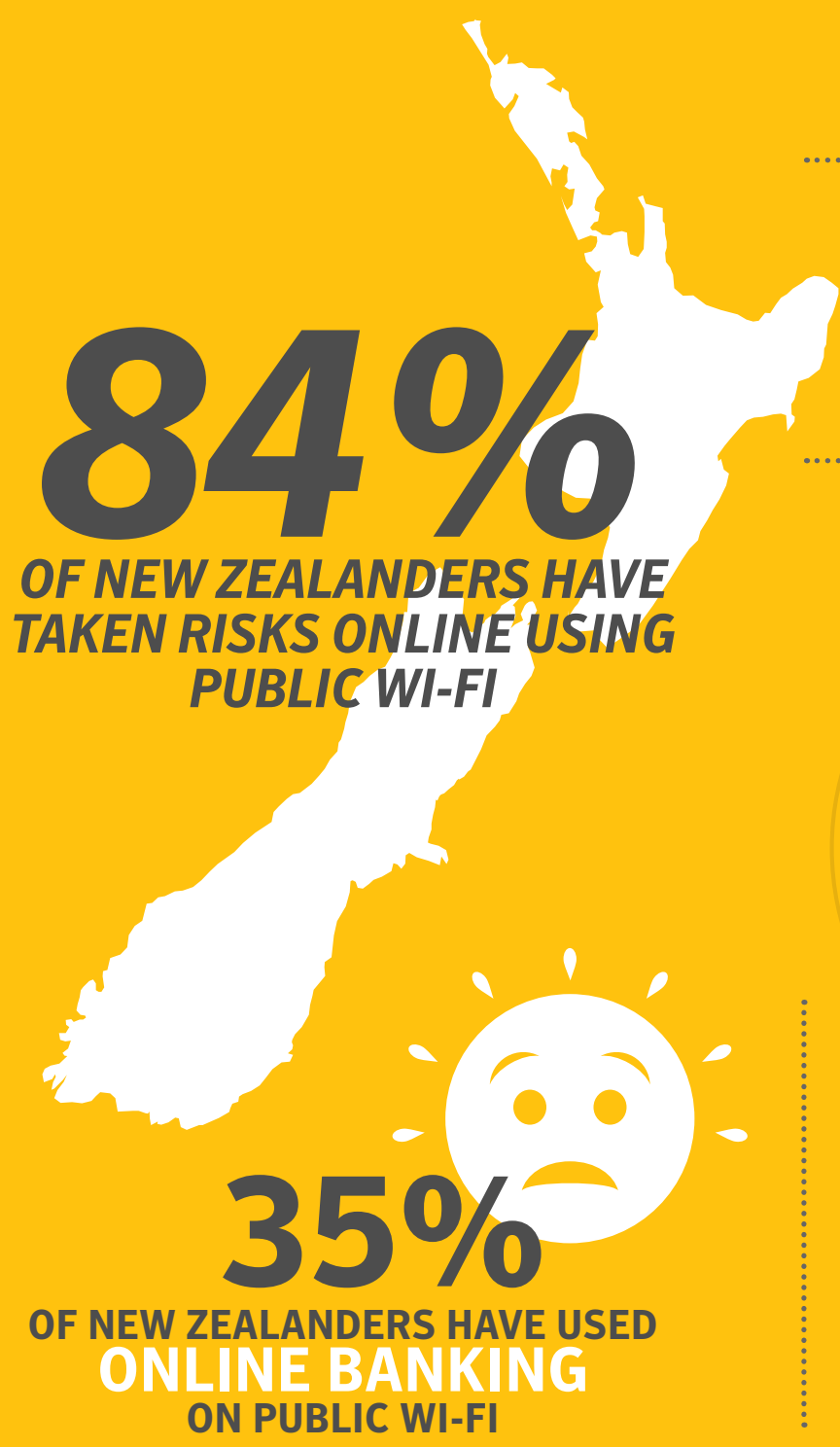
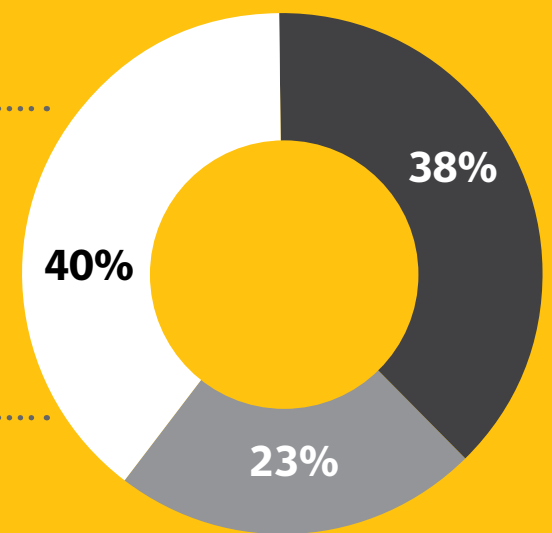


THE NUMBERS: NEW ZEALAND PUBLIC WI-FI USAGE

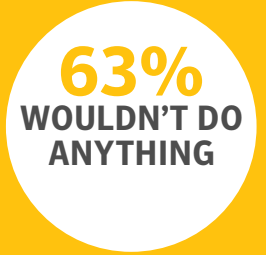


CAN YOU TELL THE DIFFERENCE BETWEEN A SECURE AND UNSECURE PUBLIC WI-FI NETWORK?

● Yes ● No ● Unsure



WHAT WOULD YOU BE WILLING TO EXCHANGE OR DO TO SECURE A STRONG AND FREE WI-FI CONNECTION?



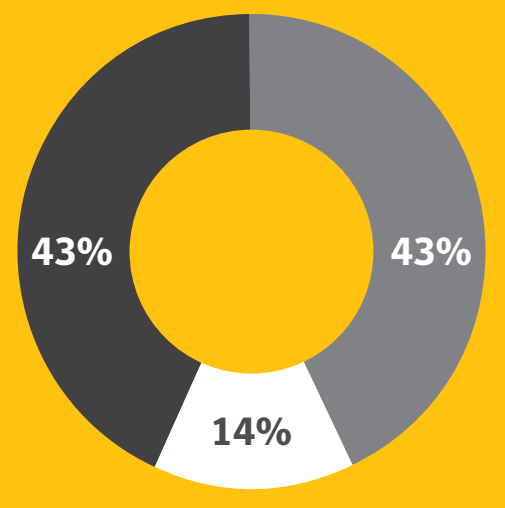
OF NEW ZEALANDERS WOULD BE **HORRIFIED** IF A HACKER STOLE DETAILS OF THEIR BANK ACCOUNTS AND FINANCIAL INFORMATION



54%

OF NEW ZEALANDERS MAKE A CHOICE ON HOTEL/HOSTEL/HOLIDAY RENTAL BASED ON A STRONG WI-FI SIGNAL

DO YOU USE A VPN EVERY TIME YOU USE WI-FI?



● Yes ● No ● Never heard of VPN



FROM THE EXPERTS: PUBLIC WI-FI SECURITY TIPS AND TRICKS

Be vigilant

Review the network you're joining, and check with staff for the correct network name. Cyber criminals often set up rogue hotspots that may sound close to the name of the legitimate network you may be trying to connect to.

Avoid networks with no passwords

Ensure you only join password protected public Wi-Fi hotspots, even if you need to buy a cup of coffee to get the password at a café.

Login securely

Don't access sensitive information or online accounts via an app. Go directly to the website and verify they are using HTTPS before logging in. Enable two-factor authentication to increase your security coverage.

Manage your connections

Ensure to turn off any auto-connect settings for Wi-Fi or Bluetooth on your devices. Disable file sharing as well to ensure you aren't unknowingly sharing files with nearby devices.

Manage your accounts

Always log out of accounts when you're finished using them.

Use a trusted VPN

Using a virtual private network (VPN) will encrypt your information going in and out of your device, so it can't be read. Norton WiFi Privacy is a VPN app which automatically turns on when it detects a public Wi-Fi network.



Use Norton™ WiFi Privacy to help protect your devices on public Wi-Fi connections, available now in leading electrical retailers, or visit nz.norton.com/wifi-privacy



Source: Norton Wi-Fi Risk Report, 2017 - New Zealand